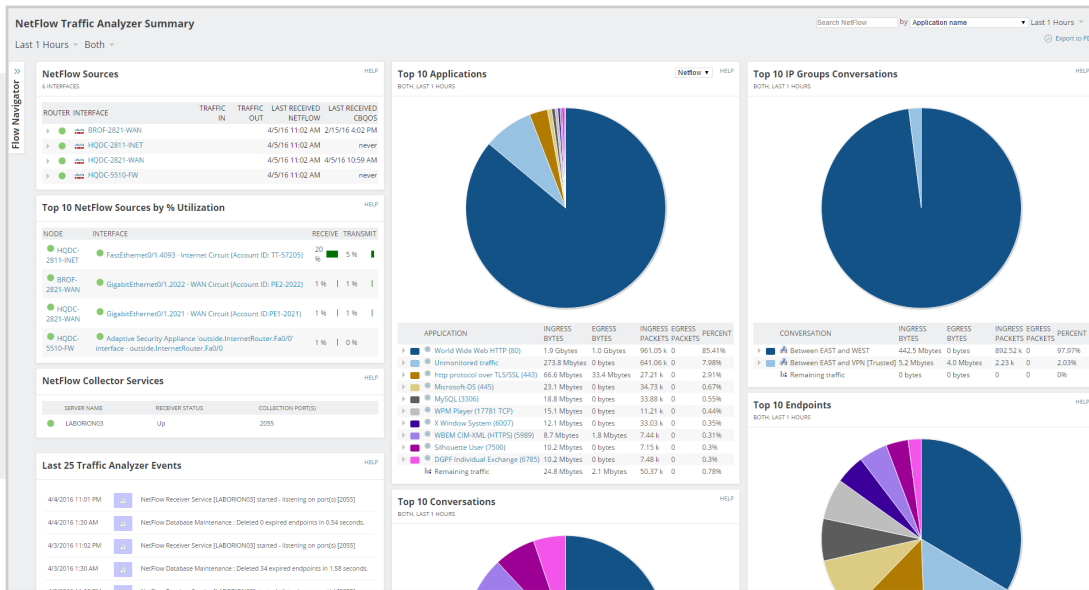


# NetFlow Traffic Analyzer

## Real-Time Network Utilization and Bandwidth Monitoring



SolarWinds® NetFlow Traffic Analyzer (NTA) allows you to capture data from continuous streams of network traffic, and convert those raw numbers into easy-to-interpret charts and tables that quantify exactly how the corporate network is being used, by whom, and for what purpose.

[DOWNLOAD FREE TRIAL](#)

Fully Functional for 30 Days

### WHY CHOOSE NETFLOW TRAFFIC ANALYZER?

- » NTA collects and analyzes flow data from multiple vendors, including NetFlow v5 and v9, Juniper® J-Flow™, sFlow®, Huawei® NetStream™, and IPFIX.
- » NTA supports advanced application recognition with Cisco® NBAR2.
- » NTA shows pre- and post-policy CBQoS class maps so you can optimize your CBQoS policies.
- » NTA will help you identify malicious or malformed traffic with port 0 monitoring.
- » NTA includes WLC network traffic analysis so you can see what is using your wireless bandwidth.
- » NTA supplements Network Performance Monitor by helping to identify the cause of high bandwidth. Built on the Orion® Platform, NTA provides the ability to purchase and fully integrate with additional network monitoring modules (Config Management, WAN Management, VoIP, Device Tracking, IP Address Management), as well as systems, storage, and virtualization management in a single web console.

## FEATURES

### Bandwidth Utilization Monitoring

#### *Bandwidth Threshold Alerting*

Delivers an instant alert notification, including a list of top talkers when an interface exceeds its bandwidth utilization threshold.

#### *Bandwidth Usage by Application*

Provides valuable insights into which applications are consuming the most network bandwidth, and tracks application traffic arriving from designated ports, source IPs, destination IPs, and even protocols.

#### *Bandwidth Usage by IP Groups*

Analyzes network traffic with custom overlapping IP address groups. Create your own IP address groups to view network traffic the way that you want to see it.

### Network Traffic Monitoring and Forensics

#### *Traffic Analysis Dashboard*

Delivers a comprehensive, customizable view of your network traffic on a single pane of glass, allowing you to spot potential problems quickly with top ten views of network traffic data. Get to the root cause of bandwidth issues with an intuitive point-and-click interface.

#### *Cross-stack Network Data Correlation*

Accelerate identification of root cause by dragging-and-dropping network performance metrics on a common timeline for immediate visual correlation across all of your network data.

#### *Network Traffic Forensics*

Enables you to drill down into any element's traffic using multiple views to get the perspective you're looking for. You can investigate and isolate excessive network bandwidth utilization and unexpected application traffic.

#### *CBQoS Performance Views*

Enables you to view network traffic segmented by Class of Service methods, measure effectiveness of your CBQoS policies, and quantify bandwidth consumption by class map.

#### *Port 0 Monitoring*

TCP/UDP monitoring of Port 0 traffic highlights any flows directed to port 0 so you can identify intrusive traffic.

#### *Border Gateway Protocol*

Enables you to set up customized views of internet traffic for ISPs and organizations to better understand how traffic is balanced across providers.

[DOWNLOAD FREE TRIAL](#)

Fully Functional for 30 Days

## Flow-based Monitoring and Reporting

### *Multi-Vendor Device Support*

- » Analyzes Cisco NBAR2 and NetFlow v5 and v9, Juniper J-Flow, IPFIX, sFlow, Huawei NetStream, and other flow data
- » Supports devices from Cisco, HP®, Juniper, Huawei, Extreme Networks®, Nortel Networks®, and other leading vendors
- » Supports IPFIX traffic from VMware® vSwitch

### *Flow-based Reporting*

Enables you to create in-depth network traffic reports with a few clicks, or schedule automatic weekly delivery to your team.

### *Flow Navigator*

Build complex, multi-variable filters to help you answer questions faster.

### *Top-Talker Optimization*

Determines which flows are representative of the majority of bandwidth usage. It stores those flows while disregarding flow data from users and applications that have a negligible impact on overall bandwidth. Boost overall performance of SolarWinds NTA up to 10x when capturing flows that represent 95% of the total network traffic.

## SOLARWINDS NETFLOW TRAFFIC ANALYZER DOES MORE

### *Integrated Fault, Performance, and Configuration Management*

Integrates with SolarWinds Network Performance Monitor (NPM), SolarWinds Network Configuration Manager (NCM), and SolarWinds User Device Tracker (UDT). This integration provides a unified solution for fault, performance, configuration management, automated device tracking, and switch port management.

### *Integration with Microsoft® Active Directory®*

Leverages your existing Active Directory user accounts to simplify login and account management.

[DOWNLOAD FREE TRIAL](#)

Fully Functional for 30 Days

## SYSTEM REQUIREMENTS

HARDWARE	MINIMUM REQUIREMENTS
CPU	NTA Main Power - Quad Core 3GHz or better NTA Flow Storage Database - Quad Core 3GHz or better
Memory	NTA Main Poller - 3GB NTA Flow Storage Database - 16GB
Hard Drive	NTA Main Poller - 3GB NTA Flow Storage Database - 20GB

SOFTWARE	MINIMUM REQUIREMENTS
OS	NTA Main Poller - Windows Server® 2012, 2012 R2, and 2016 NTA Flow Storage Database - Windows Server 2012, 2012 R2, and 2016
Database	Main - NTA shares the main SQL database with Network Performance Monitor Flow Database - Microsoft SQL Server® 2016 SP1+ or newer

## INTEGRATION WITH OTHER SOLARWINDS PRODUCTS

To deploy SolarWinds NetFlow Traffic Analyzer, SolarWinds Network Performance Monitor (NPM) needs to be installed on the same server

*NOTE: The minimum server requirements listed assume default configuration. Significantly increasing the polling rate or flow collection rate could result in additional load on the server, which may require a larger CPU or additional memory.*

## TRY BEFORE YOU BUY. DOWNLOAD A FREE TRIAL!

Network traffic analysis has never been easier! Don't just take our word for it. Download a free 30-day trial and in typically about an hour, you can start analyzing network traffic and identifying which endpoints, applications, and protocols are consuming the most bandwidth.

[DOWNLOAD FREE TRIAL](#)

Fully Functional for 30 Days

## ABOUT SOLARWINDS

SolarWinds provides powerful and affordable IT management software to customers worldwide, from Fortune 500® enterprises to small businesses, managed service providers (MSPs), government agencies, and educational institutions. We are committed to focusing exclusively on IT, MSP, and DevOps professionals, and strive to eliminate the complexity that our customers have been forced to accept from traditional enterprise software vendors. Regardless of where the IT asset or user sits, SolarWinds delivers products that are easy to find, buy, use, maintain, and scale while providing the power to address key areas of the infrastructure from on-premises to the cloud. This focus and commitment to excellence in end-to-end hybrid IT performance management has established SolarWinds as the worldwide leader in both network management software and MSP solutions, and is driving similar growth across the full spectrum of IT management software. Our solutions are rooted in our deep connection to our user base, which interacts in our THWACK® online community to solve problems, share technology and best practices, and directly participate in our product development process. Learn more today at [www.solarwinds.com](http://www.solarwinds.com).

[DOWNLOAD FREE TRIAL](#)

Fully Functional for 30 Days

## LEARN MORE

### AMERICAS

Phone: 866.530.8100

Fax: 512.682.9301

Email: [sales@solarwinds.com](mailto:sales@solarwinds.com)

### EMEA

Phone: +353 21 5002900

Fax: +353 212 380 232

Email: [emeasales@solarwinds.com](mailto:emeasales@solarwinds.com)

### APAC

Phone: +65 6593 7600

Fax: +65 6593 7601

Email: [apacsales@solarwinds.com](mailto:apacsales@solarwinds.com)

### FEDERAL

Federal Reseller and System Integrator Sales

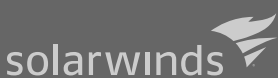
Phone: 877.946.3751

Fax: +353 212 380 232

Email: [federalsales@solarwinds.com](mailto:federalsales@solarwinds.com)

For product information about SolarWinds products, visit [solarwinds.com](http://solarwinds.com), call, or email.

7171 Southwest Parkway | Building 400 | Austin, Texas 78735



For additional information, please contact SolarWinds at 866.530.8100 or email [sales@solarwinds.com](mailto:sales@solarwinds.com).

To locate an international reseller near you, visit [http://www.solarwinds.com/partners/reseller\\_locator.aspx](http://www.solarwinds.com/partners/reseller_locator.aspx)

© 2018 SolarWinds Worldwide, LLC. All rights reserved.

The SolarWinds, SolarWinds & Design, Orion, and THWACK trademarks are the exclusive property of SolarWinds Worldwide, LLC or its affiliates, are registered with the U.S. Patent and Trademark Office, and may be registered or pending registration in other countries. All other SolarWinds trademarks, service marks, and logos may be common law marks or are registered or pending registration. All other trademarks mentioned herein are used for identification purposes only and are trademarks of (and may be registered trademarks) of their respective companies.