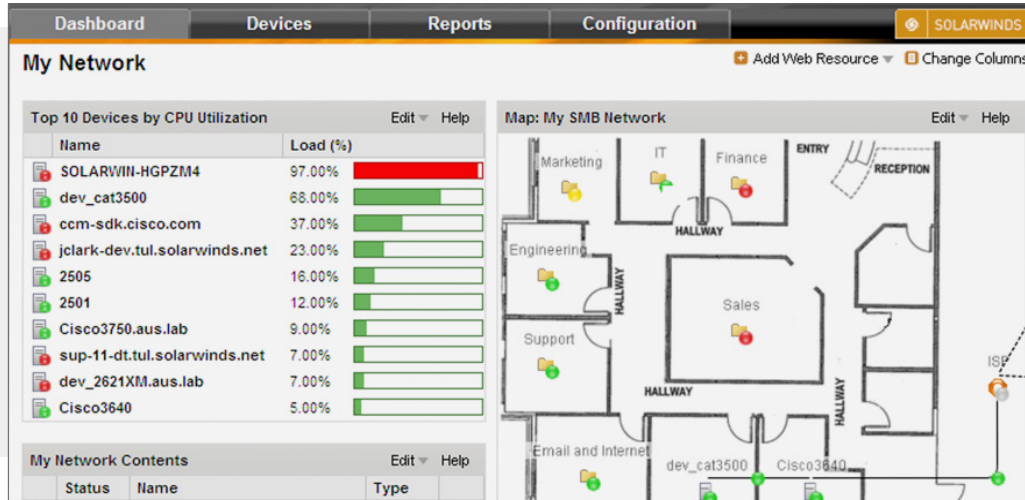


SolarWinds ipMonitor

Essential up/down and performance monitoring for networks, servers, and applications



Do you know what's going on right now with all the network devices, servers, and applications that are the magic behind your business? To keep on top of what's happening with all of those moving parts, you need an easy-to-use, reliable monitoring solution that tells you what's up, what's down, and what's not performing as expected.

SolarWinds® ipMonitor® is designed to deliver out-of-the-box, visibility into essential availability and performance metrics for your critical IT environment. Plus, ipMonitor includes a built-in database and web server, so you don't need to install anything but ipMonitor—making it fast, lightweight, and affordable.

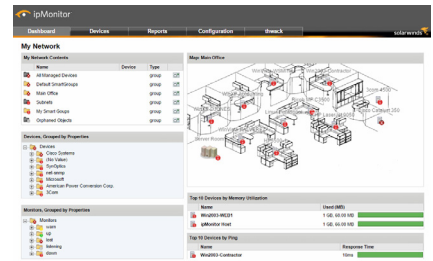
IPMONITOR HIGHLIGHTS

- » Quickly discovers infrastructure and recommends SmartMonitor settings—designed to make setup simple and fast
- » Provides an easy-to-use web interface and network maps for clear, at-a-glance views of your environment
- » Sends customizable alerts and reports to help ensure you are the first to know about network issues or application failures
- » Minimizes downtime with automated remediation capabilities
- » Simulates end-user experience for web and other applications
- » Uses standard SNMP and WMI for agentless, monitoring of applications and systems
- » Includes an embedded web server and database, designed for a simple, integrated installation experience without the hassle or expense of installing separate components

IPMONITOR FEATURES

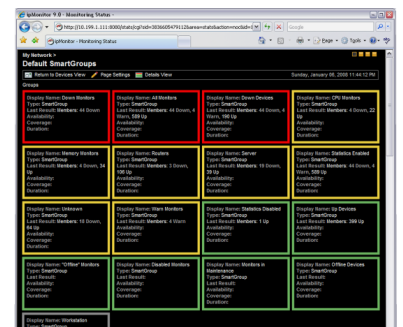
Easy-to-Use Web Interface With Centralized Dashboard Views

The ipMonitor web-based interface offers centralized, customizable summary views that can provide visibility into the health of your IT infrastructure. With support for drag and drop, it's designed to make it easy to add and remove elements from the view to help ensure you have the reports, statistics, and gauges you need—right at your fingertips. ipMonitor dashboards also make it easy to identify problem areas at a glance so that you can resolve the issue quickly.



Built-In Reporting with NOC Dashboard

ipMonitor is intended to deliver a full-screen NOC view that will knock your socks off, providing easy-to-view status reports with drill-down into groups and monitors in your environment. Additionally, from the ipMonitor reporting interface, point and shoot zoomable reports can give you the ability to view data for a specific time period or event—a feature that is particularly useful when you are trying to troubleshoot issues and identify the root cause of failures.



Lightweight Installation

ipMonitor includes a fully integrated database and web server, helping eliminate additional costs that can be inherited through a dependency on third-party databases or web servers. ipMonitor is designed to be a self-reliant monitoring solution that preserves the integrity of your data, and makes sure that you are the first to be alerted of service interruption, before it affects your end users.

Wizard-Driven Setup & Express Device Discovery

It's hard to believe, but true. ipMonitor can be installed and operational in typically in minutes, using a slick Startup Wizard that guides you through the automated discovery and alert configuration process so that you don't have to lift a finger. Plus, the new and improved Discovery Wizard is intended to provide a multitude of scanning methods, including IP address range, DNS zone, host import, and network neighborhood. The Discovery Wizard is designed to enable faster network scanning and discovery, and returns detailed network data, including device classifications and layer-3 topology information. ipMonitor can make getting started automatic, fast, and easy.

Out-of-the-Box SmartMonitor Recommended Settings

The ipMonitor solution's unique SmartMonitor technology suggests optimal monitors and data collection settings for almost everything on your network—which can save you time and help reduce the need for you to navigate the murky waters of configuring settings by hand. SmartMonitor technology leverages the collective experience of our SolarWinds engineers to help ensure that you receive network coverage quickly, and with the most advantageous network monitoring settings.

Dynamic Network Mapping

ipMonitor can auto-discover network devices and create rich network maps that can be customized to show the connection between elements or to add nested elements. Maps help to enable you to visually monitor network health with dynamically managed status indicators that offer drill-down capabilities for quicker problem resolution.

Enhanced Device Grouping for Easy Management

ipMonitor helps to make it painless to manage lists of devices and their logical organization with enhanced grouping and nested grouping capabilities. Plus, SmartGroups is designed to allow dynamic grouping of devices and monitors based on user-defined filters. A centralized view of device and monitor groups is displayed in an Explorer-style tree format that offers one-click navigation to the properties and settings for that element, helping to make it easier and faster to manage groups of devices.

Automatic Alerting

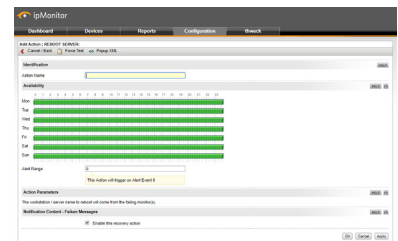
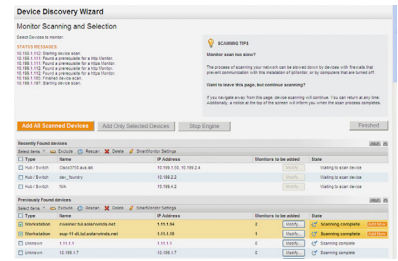
ipMonitor offers more than 14 different types of notifications to help ensure that you are the first to know about network issues or application failures. Alerts can be as simple as receiving an email or text message on your cell phone, or as comprehensive as writing to Windows® Event Log files.

Automatic Recovery

ipMonitor can be easily configured to take corrective actions to restore services if a failure occurs, including restarting failed applications, restarting Windows services, rebooting servers, and executing scripts. ipMonitor helps minimize downtime by automating remediation steps.

True Remote Administration

SolarWinds ipMonitor is designed to be a safe web-based interface that allows users to scan their network, configure monitors, or take corrective action from any supported browser. You can monitor your infrastructure from virtually anywhere with an internet connection—freeing you from the office.



User Experience Monitoring

ipMonitor can show your users the love—even the high maintenance ones. Going beyond basic availability checking, ipMonitor is designed to give you complete visibility into the quality of an end-user's experience. In fact, ipMonitor can mimic a user's behavior by performing synthetic transactions. You'll be alerted to issues before your users notice a blip in the availability of business-critical applications, like email, web, or database services.

HARDWARE	MINIMUM REQUIRMENTS
CPU	Single core 2.0GHz
Memory	512MB
Hard Drive	240MB Free
SOFTWARE	MINIMUM REQUIRMENTS
Operating System	Windows 8, Windows 2012 (.net Framework 3.5 required), Windows 10, Server 2012R2, and Server 2016
Web Browser	Microsoft Internet Explorer® version 11 or later ipMonitor supports the two most recent versions of the following web browsers available at the release date: Firefox, Chrome

LEARN MORE

AMERICAS

Phone: 866.530.8100

Fax: 512.682.9301

Email: sales@solarwinds.com

EMEA

Phone: +353 21 5002900

Fax: +353 212 380 232

Email: emeasales@solarwinds.com

ASIA

Tel : +65 6422 4123

Fax : +65 6593 7601

Email: apacsales@solarwinds.com

PACIFIC

Phone: +61 2 8412 4910

Email: apacsales@solarwinds.com



For product information about SolarWinds products, visit solarwinds.com, call, or email.

7171 Southwest Parkway | Building 400 | Austin, Texas 78735

For additional information, please contact SolarWinds at 866.530.8100 or email sales@solarwinds.com.

To locate an international reseller near you, visit solarwinds.com/partners/reseller_locator.aspx

© 2018 SolarWinds Worldwide, LLC. All rights reserved.

The SolarWinds, SolarWinds & Design, Orion, and Thwack trademarks are the exclusive property of SolarWinds Worldwide, LLC or its affiliates, are registered with the U.S. Patent and Trademark Office, and may be registered or pending registration in other countries. All other SolarWinds trademarks, service marks, and logos may be common law marks or are registered or pending registration. All other trademarks mentioned herein are used for identification purposes only and are trademarks of (and may be registered trademarks) of their respective companies.