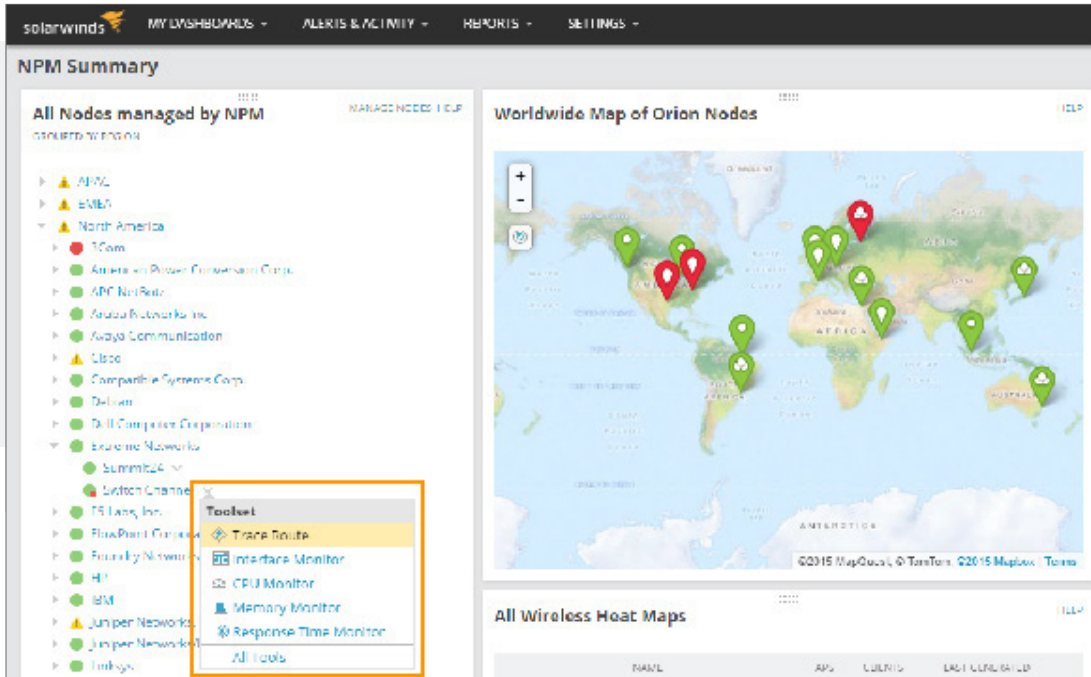


SolarWinds Engineer's Toolset Fast Fixes to Network Issues



SolarWinds® Engineer's Toolset (ETS) helps you monitor and troubleshoot your network with the most trusted tools in network management. *Version 11.0* now comes with an intuitive web console for 5 of the most popular tools - Response Time Monitor, Interface Monitor, CPU Monitor, Memory Monitor, and TraceRoute.

TRY IT FREE

14 days, full version

WHY CHOOSE ENGINEER'S TOOLSET?

- » Monitor and alert in real time on network availability and health.
- » Perform robust network diagnostics for faster troubleshooting and quick resolution of complex network issues.
- » Easily deploy an array of network discovery tools including Port Scanner, Switch Port Mapper, and Advanced Subnet Calculator.
- » Manage Cisco® devices with specialized tools including Real-time NetFlow Analyzer, Config Downloader, and Config Compare.
- » Cut troubleshooting time in half and put frequently used tools at your fingertips. SolarWinds Orion integration makes easier and faster troubleshooting allowing you to start tools contextually from any monitored element in Orion.

INTUITIVE WEB INTERFACE

Response Time Monitor

Web access for Response Time Monitor allows you to monitor availability of multiple devices in real time and obtain latency and availability information in tabular form.

[TRY IT FREE](#)

14 days, full version

Memory Monitor

Web-based Memory Monitor allows you to monitor memory utilization in real time and enables you to view current memory utilization alongside the total memory available.

CPU Monitor

Monitor CPU load for multiple devices in real time and set warning and alarm thresholds for each device independently.

Interface Monitor

The Interface Monitor allows you to view real-time interface statistics for routers and switches simultaneously.

TraceRoute

The Web-based Trace Route utility enables you to trace the route of a network path and analyze the performance and latency of each hop across a communication path.

TOOLKIT ADMINISTRATOR

Toolset Launchpad

Quickly access your favorite tools and all networking tools. Customize these groups as required.

Workspace Studio

The innovative Workspace Studio allows you to implement tabbed views displaying a wide range of your vital network statistics.

CONFIGURATION MANAGEMENT

Manage network devices with specialized tools including Real-time NetFlow Analyzer, Config Downloader, and Config Compare.

Config Compare

Compare the running configuration of a Cisco® router or switch with the startup configuration stored in non-volatile NVRAM.

Config Downloader

Download device configuration files from a Cisco CMTS or network router to a remote PC.

Config Editor/Viewer

Extracts Cisco router running network configurations and automatically archives them for future reference.

Config Uploader

Enables you to upload configuration changes to routers or switches via SNMP. You can change an entire configuration or just one or two parameters.

NetFlow Configurator

Enables you to remotely configure NetFlow v5 via SNMP on supported Cisco devices - it's never been easier to get started with NetFlow!

TFTP Server

Enables you to concurrently upload and download executable images and configurations to routers and switches.

DIAGNOSTICS

Perform robust network diagnostics for troubleshooting and quickly resolve complex network issues with tools such as Ping Sweep, DNS Analyzer, and Trace Route.

Network Diagnostics with Enhanced Ping

Diagnose network problems by continuously monitoring devices in real-time and displaying response rates in graphical charts.

Ping

"Simple ping" allows you to keep a running response time log and export results.

GENERAL/OTHER

A collection of effective systems management tools including WAN Killer, Wake-on-LAN, WMI Browser, and more.

Remote TCP Reset

Remotely displays all active sessions on routers and terminal, dial-in, and access servers.

TRY IT FREE

14 days, full version

Update System MIBs

Enables you to view, update, and publish MIB changes to the user description fields for any SNMP device.

Wake-On-LAN

Generates a "Magic Packet" to remotely power on PCs attached to networks.

WAN Killer Network Traffic Tool

Lets you test your network by generating random traffic on your Wide Area Network (WAN), adjusting circuit bandwidth and the percent of load.

MIB Scanner

The MIB Scanner interrogates devices to determine if the MIB is supported by the specified network devices.

IPAM/DNS/DHCP

Monitor IP addresses, DHCP scopes with easy-to-use tools such as IP Address Management, DHCP Scope Monitor, Advanced Subnet Calculator, and more.

Subnet Calculator

Performs classful subnet calculations, Classless Inter-Domain Routing (CIDR) calculations, and DNS resolution.

DHCP Scope Monitor

Polls DHCP servers to extract IP scopes and highlight scopes low on dynamically assigned IP addresses.

DNS Structure Analyzer

The DNS Structure Analyzer that visually displays the hierarchy of DNS resource records, including name server, CName, and pointer.

DNS Audit

Enables you to locate DNS database errors and validate forward and reverse resolution of domain names.

DNS Who Is Resolver

Allows you to look up and report on domain names, URLs, IP addresses, network addresses, and e-mail addresses.

TRY IT FREE

14 days, full version

IP Address Management

Determines which IP addresses are not in use and how long it has been since they have been used.

Spam Blacklist

Enables you to test corporate e-mail servers to ensure they are not listed in one of the spam blacklist databases.

TRY IT FREE

14 days, full version

LOG MANAGEMENT

Effective log management tools for creating, receiving, and logging SNMP traps including tools such as Syslog Server for syslog message collection and filtering.

SNMP Trap Editor

Enables you to modify SNMP trap templates and mimic critical alerts to ensure management systems are functioning properly.

SNMP Trap Receiver

Enables you to receive, log, and view SNMP traps and verify that a trap source is configured and functioning properly.

Syslog Message Center

Allows you to send and receive syslog messages and decode the messages for logging purposes.

NETWORK DISCOVERY

Deploy an array of network discovery tools including Port Scanner, Switch Port Mapper, and Advanced Subnet Calculator.

IP Network Browser

Performs network discovery on a single subnet or a range of subnets using ICMP and SNMP.

MAC Address Discovery

Scans subnets and constructs a table relating IP addresses to MAC address, DNS, and manufacturer address.

Network Discovery Tool - Network Sonar

Enables you to produce a detailed network inventory in just minutes and generate reports using built-in templates.

Ping Sweep

Scan a range of IP addresses to display which addresses are in use and perform reverse DNS lookups.

Port Scanner

Tests for open TCP ports across IP addresses, port ranges, or a selection of specific machines and ports.

SNMP Sweep

Query an IP address range to locate used and unused IP addresses, and obtains data about each system in the range.

Subnet List

Discover all subnets and masks on a network by scanning route tables on a seed router.

Switch Port Mapper

Remotely discover devices connected to each port on a switch or hub, as well as details about each port.

NETWORK MONITORING

Monitor and alert in real time on network availability and health with tools including Real-Time Interface Monitor, SNMP Real-Time Graph, and Advanced CPU Load.

CPU Load Monitor

Allows you to monitor and graph the real-time CPU load on routers and set alarm thresholds to quickly identify problems.

Bandwidth Gauge

This utility displays bandwidth statistics, in real-time, for data being received and transmitted for any remote network device.

CPU Gauges

Monitor the CPU load on routers, switches, and Windows® 2000 and later computers via SNMP.

NetFlow Real-time Tool

Enables you to perform real-time capture and analysis of Cisco® NetFlow data, providing in-depth visibility into bandwidth utilization.

TRY IT FREE

14 days, full version

Proxy Ping

Allows you to remotely initiate a ping test from any remote Cisco® router to any other SNMP-enabled device.

Network Interface Monitor

Displays real-time networking monitoring statistics from routers and switches simultaneously.

Router CPU Load

Monitors the CPU load on multiple Cisco® routers concurrently, recording peak load level and when it happened.

SNMP Device Performance Tool

Enables you to collect and graph performance data from any SNMP-enabled device.

TraceRoute Tool

Enables you to trace the route of a network path from your computer to any other device.

Availability Monitor Tool - Watch It!

An availability monitoring tool that enables monitoring and alerting on the availability of critical network devices directly from your desktop.

SECURITY

Ensure network security with handy tools including Router Password Decryption, SNMP Brute Force Attack, and SNMP Dictionary Attack.

Router Password Decryption

This utility decrypts any Cisco® type-7 passwords for routers and switches, enabling you to recover lost passwords.

SNMP Brute Force Attack

Enables you to attack an IP address with SNMP queries to determine the SNMP read-only and read-write community strings.

SNMP Dictionary Attack

Simulate attacks using permuted hacker dictionaries on network devices to identify security vulnerabilities.

TRY IT FREE

14 days, full version

SNMP

MIB Viewer

Quickly retrieve frequently used MIBs using SolarWinds extensive MIB database.

MIB Walk

Discover and produce reports detailing which MIBs and OIDs are supported on a particular device.

SNMP MIB Browser

Query remote devices for software and hardware configurations via SNMP using SolarWinds extensive MIB database.

TRY IT FREE

14 days, full version

SYSTEM REQUIREMENTS

MINIMUM HARDWARE REQUIREMENTS

	DESKTOP	WEB/SERVER
CPU	500MHz or faster	Dual Core, 2GHz or faster
Memory	128 MB	4 GB
Hard Drive	640 MB	4 GB

NOTE: The minimum server requirements listed assume default configuration. Significantly increasing the poll rate or statistic collection rate could result in additional load on the server, which may require a larger CPU or additional memory.

MINIMUM SOFTWARE REQUIREMENTS

DESKTOP	WEB/SERVER
<p>OS</p> <p>One of the following 32-bit or 64-bit operating systems is required:</p> <ul style="list-style-type: none"> » Windows Server® 2012, 2008 and R2, 2003 SP1 or later » Windows Vista Business and Ultimate Editions » Windows 7, 8, 8.1 	<p>OS</p> <ul style="list-style-type: none"> » Windows Server® 2008 R2, 2008 R2 SP1, 2012, 2012 R2 or later
<p>Other</p> <p>Network card or modem required; sound card recommended, but not required.</p>	<p>SQL Server</p> <ul style="list-style-type: none"> » SQL Server 2005 SP4 , SQL 2008 without SP, 2008 SP1, 2008 SP2, 2008 SP3, SQL 2008 R2 without SP, 2008 R2 SP1, 2008 R2 SP2, SQL 2012, SQL 2012 SP1, SQL Server 2014 » Block installation SQL 2005 SP1, SP2, SQL 2000 and MSDE
<p>Browser</p> <ul style="list-style-type: none"> » IE 8 and later » Firefox 42 and later 	<p>Browser</p> <ul style="list-style-type: none"> » IE 8 and later » Firefox versions 42 » Chrome versions 47

TRY IT FREE

14 days, full version

NOTE: The minimum server requirements listed assume default configuration. Significantly increasing the poll rate or statistic collection rate could result in additional load on the server, which may require a larger CPU or additional memory.

TRY BEFORE YOU BUY. DOWNLOAD A FREE TRIAL!

Don't just take our word for it. At SolarWinds, we believe you should try our software before you buy. That's why we offer free trials that deliver full product functionality. Simply download the 14-day free trial, install the software, and start using the 60+ tools to easily manage and troubleshoot your network.

TRY IT FREE

14 days, full version

ABOUT SOLARWINDS

SolarWinds provides powerful and affordable IT management software to customers worldwide. Focused exclusively on IT Pros, we strive to eliminate the complexity in IT management software that many have been forced to accept from traditional enterprise software vendors. SolarWinds delivers on this commitment with unexpected simplicity through products that are easy to find, buy, use, and maintain, while providing the power to address any IT management problem on any scale. Our solutions are rooted in our deep connection to our user base, which interacts in our online community, thwack®, to solve problems, share technology and best practices, and directly participate in our product development process. Learn more at <http://www.solarwinds.com>.

LEARN MORE

AMERICAS

Phone: 866.530.8100

Fax: 512.682.9301

Email: sales@solarwinds.com

EMEA

Phone: +353 21 5002900

Fax: +353 212 380 232

Email: sales@solarwinds.com

APAC

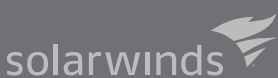
Tel : +65 6593 7600

Fax : +65 6593 7601

Email: sales@solarwinds.com

For product information about SolarWinds products, visit solarwinds.com, call, or email.

7171 Southwest Parkway | Building 400 | Austin, Texas 78735



For additional information, please contact SolarWinds at 866.530.8100 or email sales@solarwinds.com.

To locate an international reseller near you, visit http://www.solarwinds.com/partners/reseller_locator.aspx

© 2017 SolarWinds Worldwide, LLC. All rights reserved.

The SolarWinds, SolarWinds & Design, Orion, and THWACK trademarks are the exclusive property of SolarWinds Worldwide, LLC or its affiliates, are registered with the U.S. Patent and Trademark Office, and may be registered or pending registration in other countries. All other SolarWinds trademarks, service marks, and logos may be common law marks or are registered or pending registration. All other trademarks mentioned herein are used for identification purposes only and are trademarks of (and may be registered trademarks) of their respective companies.