

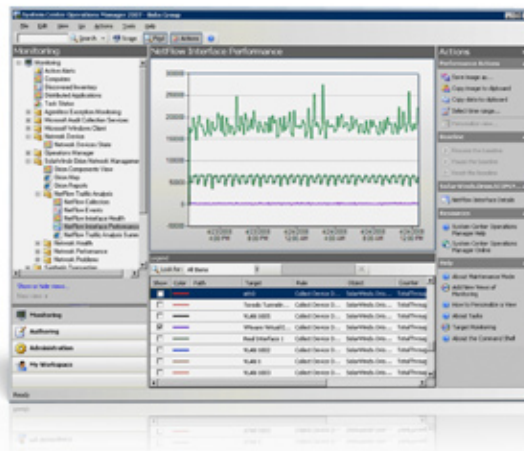
# Orion Management Pack

FOR MICROSOFT® SYSTEM CENTER

## SolarWinds Orion Network Performance Monitor Gives Microsoft System Center Unprecedented Network Visibility

“Orion Management Pack has added **excellent network health visibility** to our Microsoft System Center deployment.”

— Matt Alexander,  
Manager, Infrastructure Tools,  
IndyMac Bank



Many IT professionals use Microsoft® System Center to monitor applications and servers, however they often lack network health visibility. While they may not be directly responsible for monitoring network devices, the additional network information can dramatically enhance their troubleshooting capability by checking if network problems are impacting their servers and applications. Now SolarWinds Orion Management Pack can deliver detailed network health information to System Center from Orion Network Performance Monitor (NPM), a powerful yet

affordable network fault and performance management solution. The result is unprecedented visibility into the health of your IT infrastructure from within System Center.

Orion NPM is trusted by thousands of customers worldwide to manage their networks. This comprehensive solution scales with rapid network growth and expands with your network monitoring needs through a series of modules that extend management to NetFlow, VoIP, and wireless devices. Providing unprecedented visibility into the health of a network, Orion NPM ensures you have the real-time information you need to keep your infrastructure running at peak performance.

Microsoft System Center Operations Manager 2007 and Microsoft System Center Essentials 2007 capture and aggregate knowledge about your infrastructure, policies, processes, and best practices, enabling your IT staff to build manageable systems and automate operations in order to reduce costs, improve application availability, and enhance service delivery.

The Orion Management Pack brings extensive network visibility to Microsoft System Center Operations Manager 2007 and Microsoft System Center Essentials 2007 by capturing rich network fault and performance data from Orion NPM and presenting it natively within System Center. With the Orion Management Pack, you can quickly access and view detailed network information in System Center, including network top talkers, comprehensive network traffic summaries, and multi-vendor network device details, such as specific router throughput. Detailed network data is seamlessly integrated into System Center where it is presented with existing application and server information to provide a single comprehensive view of server, desktop, and network infrastructure performance.

### Orion Management Pack Highlights:

- Easily monitor network fault, availability, and performance data from within System Center, augmenting existing server and application information
- Extend performance and availability monitoring to UNIX and Linux servers on your network

## Orion Management Pack Features

### Integrated Network Visibility

With the Orion Management Pack, System Center gains detailed network insight delivered by Orion NPM. In just minutes, you'll immediately have visibility into network top talkers, comprehensive network traffic summaries, and multi-vendor network device details with this seamlessly integrated management pack.

### Direct Link to Orion NPM

Orion NPM's rich network performance data is periodically transmitted to the System Center interface through a data link, providing visibility into network device CPU utilization, interface, memory utilization, graphical traffic analysis, and additional network health indicators.

### System Center Network Alerts

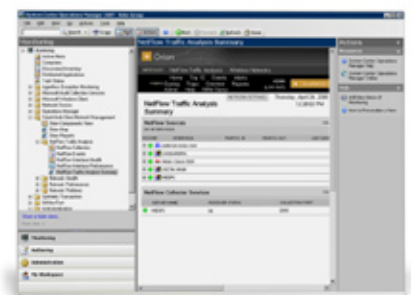
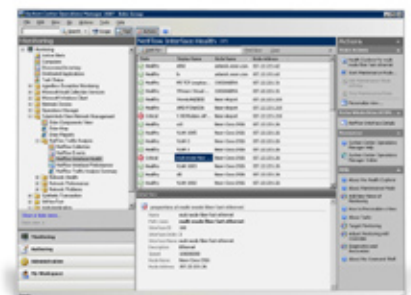
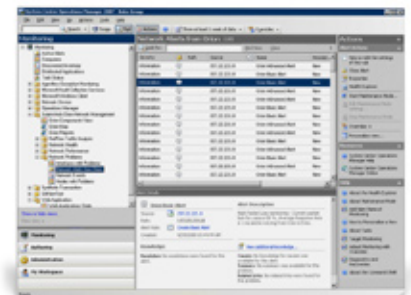
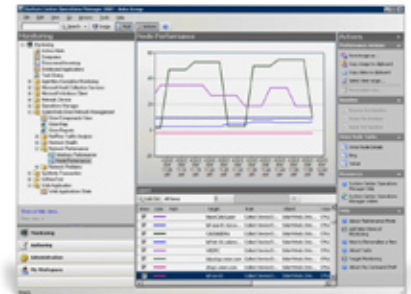
With the Management Pack in place, System Center leverages Orion NPM's ability to quickly configure alerting for correlated events, sustained conditions, and escalations. This enables you to stay on top of critical issues in your environment and quickly troubleshoot issues before they affect end users.

### NetFlow Analysis

By combining the power of Orion NPM and the Orion NetFlow Traffic Analyzer (NTA) module, it's easy to get deep visibility into network bandwidth usage, top talkers, and network-wide traffic summaries. By capturing flow data from network devices, including Cisco® NetFlow v5 or v9, Juniper® J-Flow, and sFlow®, Orion NPM and NTA deliver information to System Center that identifies which users, applications, and protocols are consuming the most network bandwidth.

### Network Performance Reports

With Orion NPM report writing capabilities, you can quickly provide custom network reports to managers, giving them precisely the information they want.



### Pricing and Licensing:

Orion Management Pack for Microsoft System Center is available for free from SolarWinds. There is no licensing for the software, it simply requires Orion Network Performance Monitor and Microsoft System Center Operations Manager 2007 or Microsoft System Center Essentials 2007. Orion NPM starts at \$2475.

### System Requirements

Minimum Hardware Requirements:  
CPU Speed: 2.0 GHz; Hard Drive Space: 2 GB; Memory: 1 GB;  
Operating System: Windows 2003 Server (32-bit or 64-bit) including R2, with IIS installed; .Net Framework 3.5; Database: SQL Server 2000 SP4 Standard/Enterprise or SQL Server 2005 Express/Standard/Enterprise

**DOWNLOAD THE FREE MANAGEMENT PACK TODAY » [WWW.SOLARWINDS.COM/SYSTEMCENTER](http://WWW.SOLARWINDS.COM/SYSTEMCENTER)**