

# SolarWinds Toolset

## Quick Start Guide



Copyright© 1995-2012 SolarWinds, Inc., all rights reserved worldwide. No part of this document may be reproduced by any means nor modified, decompiled, disassembled, published or distributed, in whole or in part, or translated to any electronic medium or other means without the written consent of SolarWinds All right, title and interest in and to the software and documentation are and shall remain the exclusive property of SolarWinds and its licensors. SolarWinds Orion™, SolarWinds Cirrus™, and SolarWinds Toolset™ are trademarks of SolarWinds and SolarWinds.com® and the SolarWinds logo are registered trademarks of SolarWinds All other trademarks contained in this document and in the Software are the property of their respective owners.

SOLARWINDS DISCLAIMS ALL WARRANTIES, CONDITIONS OR OTHER TERMS, EXPRESS OR IMPLIED, STATUTORY OR OTHERWISE, ON SOFTWARE AND DOCUMENTATION FURNISHED HEREUNDER INCLUDING WITHOUT LIMITATION THE WARRANTIES OF DESIGN, MERCHANTABILITY OR FITNESS FOR A PARTICULAR PURPOSE AND NONINFRINGEMENT. IN NO EVENT SHALL SOLARWINDS, ITS SUPPLIERS OR ITS LICENSORS BE LIABLE FOR ANY DAMAGES, WHETHER ARISING IN TORT, CONTRACT OR ANY OTHER LEGAL THEORY EVEN IF SOLARWINDS HAS BEEN ADVISED OF THE POSSIBILITY OF SUCH DAMAGES.

Microsoft® and Windows 2000® are either registered trademarks or trademarks of Microsoft Corporation in the United States and/or other countries.

Graph Layout Toolkit and Graph Editor Toolkit © 1992 - 2001 Tom Sawyer Software, Oakland, California. All Rights Reserved.

Portions Copyright © ComponentOne, LLC 1991-2002. All Rights Reserved.

SolarWinds Toolset 2.20.12 version 10.8

## **About SolarWinds**

SolarWinds, Inc develops and markets an array of network management, monitoring, and discovery tools to meet the diverse requirements of today's network management and consulting professionals. SolarWinds products continue to set benchmarks for quality and performance and have positioned the company as the leader in network management and discovery technology. The SolarWinds customer base includes over 45 percent of the Fortune 500 and customers from over 90 countries. Our global business partner distributor network exceeds 100 distributors and resellers.

## **Contacting SolarWinds**

You can contact SolarWinds in a number of ways, including the following:

<b>Team</b>	<b>Contact Information</b>
Sales	1.866.530.8100 <a href="http://www.solarwinds.com">www.solarwinds.com</a>
Technical Support	<a href="http://www.solarwinds.com/support">www.solarwinds.com/support</a>
User Forums	<a href="http://www.thwack.com">www.thwack.com</a>

## **Conventions**

The documentation uses consistent conventions to help you identify items throughout the printed and online library.

<b>Convention</b>	<b>Specifying</b>
<b>Bold</b>	Window items, including buttons and fields.
<i>Italics</i>	Book and CD titles, variable names, new terms
Fixed font	File and directory names, commands and code examples, text typed by you
Straight brackets, as in [value]	Optional command parameters
Curly braces, as in {value}	Required command parameters
Logical OR, as in value1 value2	Exclusive command parameters where only one of the options can be specified

## **Toolset Documentation Library**

The following documents are included in the SolarWinds Toolset documentation library:

<b>Document</b>	<b>Purpose</b>
Administrator Guide	Provides detailed setup, configuration, and conceptual information.
Quick Start Guide	Provides installation, setup, and common scenarios for which Toolset provides a simple, yet powerful, solution.
Release Notes	Provides late-breaking information, known issues, and updates. The latest Release Notes can be found at <a href="http://www.solarwinds.com">www.solarwinds.com</a> .

**Contents**

<i>About SolarWinds</i> .....	<i>iii</i>
<i>Contacting SolarWinds</i> .....	<i>iii</i>
<i>Conventions</i> .....	<i>iii</i>
<i>Toolset Documentation Library</i> .....	<i>iv</i>

**Chapter 1**

<b>Introduction</b> .....	<b>1</b>
<i>Editions</i> .....	<i>1</i>
<i>Benefits of SolarWinds Toolset</i> .....	<i>3</i>
<i>Key Features of SolarWinds Toolset</i> .....	<i>4</i>

**Chapter 2**

<b>Installing Toolset</b> .....	<b>5</b>
<i>Requirements</i> .....	<i>5</i>
<i>Installing Toolset</i> .....	<i>6</i>
<i>Software License Key</i> .....	<i>7</i>
<i>Upgrading Toolset</i> .....	<i>7</i>
<i>Downgrading Engineer's Edition to Standard Edition</i> .....	<i>8</i>
<i>Backing Up or Migrating Your Toolset Implementation</i> .....	<i>9</i>

**Chapter 3**

<b>Getting Started</b> .....	<b>11</b>
<i>SNMP Communication</i> .....	<i>12</i>
<i>Discovering Your Network</i> .....	<i>12</i>
<i>Setting up Workspace Studio</i> .....	<i>13</i>
<i>Understanding the Studio Layout</i> .....	<i>13</i>
<i>Getting Started</i> .....	<i>14</i>
<i>Adding Dashboard Gadgets</i> .....	<i>15</i>
<i>Adding Devices</i> .....	<i>15</i>
<i>Managing Tabs</i> .....	<i>16</i>
<i>Analyzing Your Network Traffic</i> .....	<i>16</i>
<i>Viewing and Comparing Router Configurations</i> .....	<i>19</i>

*Mapping Your Switch Ports*..... 20

*Managing Your Network IP Addresses* ..... 20

*Viewing Realtime Network Device Statistics*..... 22

---

## Chapter 1

# Introduction

SolarWinds Toolsets contain desktop applications ranging from configuration management, bandwidth and network performance monitoring to discovery and fault management. The size and complexity of your network will determine which Toolset solution that best meets your needs.

## *Editions*

The Toolset comes in different editions that include different tools. The following table provides an easily scanned breakdown of editions and the tools included in each.

<b>Tool</b>	<b>Standard Edition</b>	<b>Engineer's Edition</b>
Advanced CPU Load		X
Advanced Subnet Calculator	X	X
Bandwidth Gauges	X	X
CPU Gauges		X
Compare Configs		X
Config Editor/Viewer		X
Config Uploader		X
Config Downloader		X
DHCP Scope Monitor		X
DNS Audit		X
DNS Analyzer		X
DNS/Whois Resolver	X	X
Edit Dictionaries		X
Enhanced PING	X	X
IP Address Management		X

<b>Tool</b>	<b>Standard Edition</b>	<b>Engineer's Edition</b>
IP Network Browser		X
MAC Address Discovery		X
MIB Browser		X
MIB Updates System Fields		X
MIB Walk		X
MIB Viewer		X
NetFlow Configurator	X	X
NetFlow Realtime	X	X
Network Monitor		X
Network Performance Monitor		X
Network Sonar		X
PING	X	X
PING Sweep	X	X
Proxy PING		X
Port Scanner		X
Realtime Interface Monitor		X
Remote TCP Reset		X
Router CPU Load	X	X
Router Password Decryption		X
SNMP Brute Force Attack		X
SNMP Dictionary Attack		X
SNMP Graph		X
SNMP Sweep		X
SNMP Trap Editor		X
SNMP Trap Receiver		X

Tool	Standard Edition	Engineer's Edition
Spam Blacklist		X
Subnet List	X	X
Switch Port Mapper		X
Syslog Server		X
TFTP Server	X	X
Trace Route	X	X
Wake-on LAN	X	X
WAN Killer		X
Watch It!	X	X
Workspace Studio	X	X

## ***Benefits of SolarWinds Toolset***

Consider some of the following benefits of SolarWinds Toolset:

### **Advanced Troubleshooting**

Toolset enables deep troubleshooting capabilities that go far beyond basic up/down status monitoring or network statistics.

### **Broad Functionality**

Toolset provides a rich set of applications to address virtually every network engineering challenge from configuration management, network discovery/mapping and fault management to bandwidth and network performance monitoring.

### **Ease-of-Use**

While Toolset provides comparable functionality, cost and maintenance of your Toolset installation is less than the initial cost of most other solutions.

### **Scalable**

Toolset is friendly enough for even the smallest networks but powerful enough to manage the largest, most complex multi-vendor networks.

## ***Key Features of SolarWinds Toolset***

Considering the previously mentioned benefits of Toolset, coupled with the following features, Toolset is a simple choice to make:

### **Performance Monitoring**

Network performance monitoring is a critical component of a complete network management toolset. With SolarWinds Toolset you receive several tools that provide the ability to monitor everything from the traffic on a single port to the response time and availability of every server in your network. Several tools also provide graphical reporting and trending capabilities.

### **IP Address Management**

Management of IP addresses is complex task. With the current rate of growth of many companies it is often difficult to eliminate errors much less go back and clean up addresses on decommissioned equipment. The IP address management tools from SolarWinds were designed with speed and ease of use in mind.

### **MIB Browsing**

Using the MIB browser tools, you can view MIB values a number of different ways; you can browse through different MIB values on a device, display all MIB values, or find just one specific value. With more than 400,000 MIBs in the SolarWinds MIB database, you can view virtually any statistic stored on your network devices.

### **Diagnostic Tools**

SolarWinds Toolset includes several diagnostic tools to evaluate network problems. You can analyze your DNS settings, graph response times, trace TCP/IP routes, PING devices from a remote router, and more.

### **Network Discovery**

The network discovery tools were some of the first tools developed by SolarWinds. The majority of the discovery tools use SNMP protocol to collect information on the devices in the network. You can discover something as specific as a reverse DNS error to an entire enterprise of thousands of networks.

---

## Chapter 2

# Installing Toolset

Toolset provides a simple, wizard-driven installation process. For an enterprise-class product, the requirements are rather nominal.

## Requirements

The following table provides the minimal requirements for a Toolset installation:

Software/Hardware	Requirements
Operating System	One of the following 32-bit or 64-bit operating systems is required: <ul style="list-style-type: none"> <li>• Windows Server 2008 and R2</li> <li>• Windows XP SP3 or later</li> <li>• Windows Vista Business and Ultimate editions</li> <li>• Windows Server 2003 SP1 and later</li> <li>• Windows 7</li> </ul>
CPU Speed	500 MHz or faster
Memory	128 MB or greater
Hard Drive Space	640 MB or more
Windows Account	Install requires an account with administrator privileges
Network	Must be accessible from the computer on which the Toolset is installed to successfully use any network tools
.Net Framework	3.5 SP1 and later revisions of 3.x
Database	Syslog Server, used to capture and decode syslog messages sent from network devices, can support any of the following databases: <ul style="list-style-type: none"> <li>• SQL 2000 Sp4 MSDE, Standard, or Enterprise</li> <li>• SQL 2005 Express, Standard, or Enterprise</li> </ul>

**Note:** Microsoft Vista has implemented a layer of security (user account control (UAC)) that ensures hostile programs cannot run unnoticed with administrator privileges. When reinstalling Toolset or running Toolset applications, you may be prompted for administrator credentials, or you may be prompted to allow the application access to the computer. This is expected behavior.

## Installing Toolset

Installing Toolset is extremely simple. These applications do not require the complications of server-client architecture, the implementation of agents, or complicated script generation. The goal of Toolset has always been ease of use combined with powerful results. Before beginning the setup program, ensure your computer meets or exceeds the requirements to run Toolset. For more information, see “Requirements” on page 5.

### To install Toolset:

1. Log on with an administrator account to the computer on which you want to install SolarWinds Toolset.
2. Navigate to your download location and launch the executable. The setup program has either an `exe` or `msi` extension.
3. **If you are prompted to install required software**, click **Install**.
4. Review the Welcome text, and then click **Next**.
5. Accept the license agreement on the License Agreement window, and then click **Next**. If you do not agree to the license agreement, click **Cancel** to exit the setup program.
6. Specify the appropriate information on the Customer Information window, and then click **Next**. On this window, you can select whether the Toolset is installed to the currently logged on user account profile or made available to any user account with access to this computer.
7. Browse to a file system folder where you want to install Toolset program files, and then click **Next**. The default location is `\Program Files\SolarWinds\Toolset`.

**Note:** Do not install Toolset in the SolarWinds folder.

8. Click **Install** on the Ready to Install the Program window. Before you click install on this window, nothing has been modified on your computer. If you want to change anything you designated before this window, click **Back**.
9. Review the Setup Status window as Toolset installs.
10. Click **Finish** on the Wizard Complete window.
11. Provide the appropriate information on the Install Software License Key window, and then click **Continue**. You need a customer ID and password to successfully install the key. For more information, see “Software License Key” on page 7.

## Software License Key

After installing the program, the Toolset setup program displays the licensing window. Complete the following procedure to enable a software license key.

**To enable a software license key:**

1. Click **Enter Licensing Information**.
2. **If the computer on which you installed Toolset is connected to the Internet**, complete the following procedure.
  - a. Click **I want to activate my license over the Internet**.
  - b. Browse to <http://support.solarwinds.com>.
  - c. Login to the customer portal using your CustomerID and password.
  - d. Click **License Management**.
  - e. Browse to SolarWinds Engineer's Toolset, and then locate the unregistered licenses list.
  - f. Copy your unregistered Toolset activation key to the clipboard, and then paste it into the **Activation Key** field on the Activate Toolset window.
  - g. **If you use a proxy server to access the Internet**, check the Proxy Server checkbox, and then type the proxy address and port number.
  - h. Click **Next**.
3. **If the computer on which you are installing Toolset is not connected to the Internet**, complete the following procedure.
  - a. Click **I want to activate my license through the Customer Portal**.
  - b. Complete the procedure described on the Activate Toolset window to complete the registration.

## Upgrading Toolset

To upgrade to the current version of SolarWinds Toolset, find the upgrade path that matches your implementation in the following list:

- Upgrade Toolset from Standard or Engineer's Toolset version 8 or later to Engineer's Toolset version 10.0 can be done in place using a license key--no manual uninstall is required and no data lost.
- Upgrade Toolset from Standard Toolset to Engineer's Toolset (requires a license key).
- Upgrade Toolset from an evaluation version to a licensed version of Toolset (requires a license key).

- Downgrade Toolset from Engineer's Toolset, including the evaluation version, to Standard Toolset requires uninstalling the Engineer's version and installing the Standard version. For more information see "Downgrading Engineer's Edition to Standard Edition" on page 8.

## **Downgrading Engineer's Edition to Standard Edition**

If you are downgrading from Engineer's Toolset to Standard Toolset, complete the following procedure.

**To uninstall before upgrading toolset and keep your previously collected data:**

1. Copy the files you want to preserve to a folder on your desktop. For more information about the files to copy, see "Backing Up or Migrating Your Toolset Implementation" on page 9.
2. Uninstall your older version of Toolset.
3. Install the new version of Toolset.
4. Copy the data files from the folder on your desktop to the new installation location. For more information about the files you will be copying, see "Backing Up or Migrating Your Toolset Implementation" on page 9.

## Backing Up or Migrating Your Toolset Implementation

To back up your Toolset implementation after installing the newest version or to migrate your Toolset configuration and data files to another server, the following files should be considered integral to your success. Ensure you are installing the same version of Toolset as what was installed on the computer from which you copy these files. If you cannot find a file, you have not run the associated program. You can safely skip the file.

Files to backup or move	Purpose
*.BandwidthGauges	Bandwidth gauge settings files
Bandwidth-Monitor.cfg, dictionaries.cfg, DNS.cfg, IP-BrowserWeb.cfg, Network-Monitor.cfg, PortScan.cfg, SWDiscovery.cfg, SWNetPerfMon.cfg, TraceRoute.cfg, Watchit.cfg	Configuration settings files
*.IPDB	IP address management database
*.mdb	Syslog database
*.SNMP-Graph	SNMP Realtime graphs
*.SDB	Network Sonar databases

These files are located in the following locations by default:

```
C:\Documents and Settings\UserName\Local Settings\Application Data\SolarWinds
```

```
C:\Documents and Settings\All Users\Application Data\SolarWinds
```

\*Where *UserName* is the Windows user account.

**Note:** Some Toolset applications prompt you for a location to save specific files. If you have saved any files in a location other than the paths listed above, you will need to locate these files wherever you have saved them.



---

## Chapter 3

# Getting Started

A quick launching interface that provides immediate access to all Toolset applications has been added. Direct access is also provided to host network configuration, including IP configuration, ARP, DNS, and Route information for the local client.

The Toolset Launchpad should startup automatically after installation has completed. It can also be started by clicking **Start > All Programs > SolarWinds Toolset > SolarWinds Toolset Launchpad**.

### Quick run through of Launchpad features:

1. Click **Recently Used Tools** to display the last 5 tools that were launched. On initial installation, a default set of the top 5 tools is displayed in this category. Click on a tool to display more details about the specific functionality.
2. Add, rename, and delete tool groups simply by right-clicking on any group and selecting the appropriate action.
3. Add tools to your new group by clicking on a tool in another group and dragging into the launching pane.
4. You can change the group listing order by clicking on a group and moving up or down in the list.
5. Click **Host Network Info** to quickly see ARP, DNS, IP configuration, and Route information for the local host.
6. Click **Settings** to configure automatic startup and to add Toolset Launchpad to your Windows Task Tray. Click **Reset settings** if you want to restore all out of the box settings, including tool groupings.

## SNMP Communication

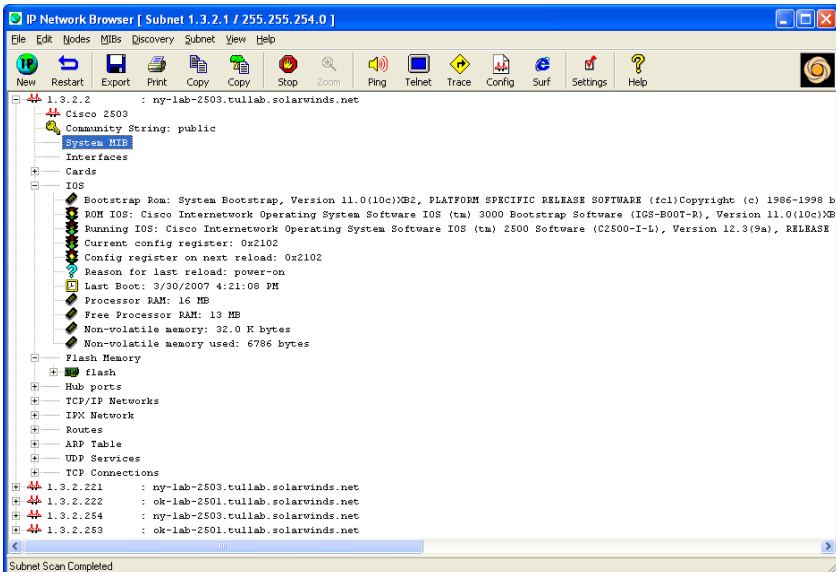
Because Toolset takes advantage of SNMP communication to collect inventory information, ensure all devices from which you want to collect detailed information have SNMP properly configured.

## Discovering Your Network

IP Network Browser is an interactive network discovery tool that provides the ability to scan an IP address range or a subnet and show details for discovered devices, including System MIB, ARP table, interfaces, IOS, drives, flash memory, and more.

### To discover your network:

1. Launch from Toolset Launchpad by clicking **Network Discovery** and then double-clicking **IP Network Browser**.
2. Type the required information to scan a single device, a subnet, or an IP address range and then click the associated **Scan** button.
3. Use the browsing tree to expand node information categories and initiate real-time discovery of details.



4. Click **Discovery > Expand and Discover Details for Selected Node** to initiate real-time discovery of all node details at once.

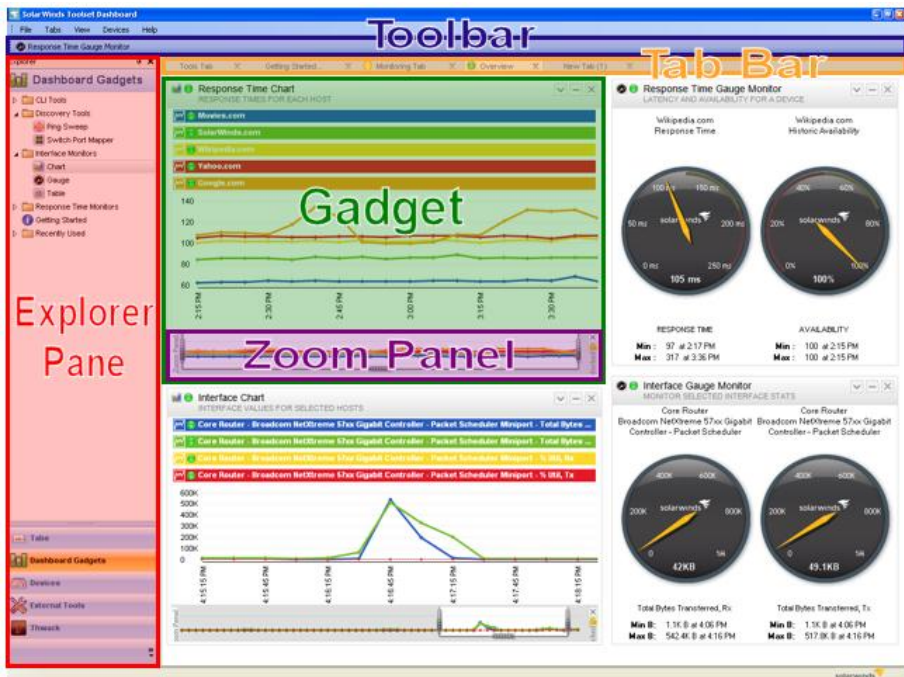
## Setting up Workspace Studio

The SolarWinds Workspace Studio allows you to implement tabbed views displaying a wide range of your vital network statistics. You can easily create views that show graphs, gauges, and tables of response times, current bandwidth, percent utilization, and more. You can also incorporate network discovery views allowing you to perform quick ping sweeps and map network switches.

The dashboard utilizes an intuitive drag-and-drop interface that allows you to quickly and easily move and size objects as you see fit. The realtime data collected by the Workspace Studio is always easy to find and manage.

## Understanding the Studio Layout

The Workspace Studio consists of tabs and gadgets presented in a fully customizable layout.



## Gadgets

Gadgets can be discovery tools, interface monitors, CLI tools, or response time monitors. For more information, see “Adding Dashboard Gadgets” on page 15.

## Tabs

Tabs are panes containing multiple gadgets. Multiple tabs can be created allowing you to create numerous customized views. Each open tab is listed on the tab bar. For more information, see “Managing Tabs” on page 16.

## Explorer Pane

The Explorer pane contains all the gadgets, tools, and devices accessible within the Workspace Studio.

## Toolbar

The toolbar is used to save devices, gadgets, and tabs that have already been configured. This allows quick and easy access to the items you use most.

## Zoom Panel

The zoom panel is shown at the bottom of all charts and is used to adjust the time period displayed. The zoom panel can be locked so that incoming data does not affect the current chart.

## Getting Started

To begin using the Workspace Studio, add a dashboard gadget to a tab. For more information, see “Adding Dashboard Gadgets” on page 15. Once a gadget has been added to a tab, you need to configure or add a device to the gadget. For more information, see “Configuring Gadgets” in the *Administrator Guide*.

The following procedure demonstrates how to add a response time chart for SolarWinds.com.

### To add a response time chart:

1. Start **SolarWinds Workspace Studio** in the SolarWinds Engineer’s Toolset folder.
2. Click **Dashboard Gadgets > Response Time Monitors**, and then drag the chart gadget onto a tab.

3. Click **Devices** in the explorer pane, expand **Monitored Devices**, and then drag **SolarWinds.com** onto the response time chart.
4. **If you want to add more devices to the chart**, drag the additional devices to the chart.

## Adding Dashboard Gadgets

Dashboard gadgets can be added by simply dragging a gadget from the explorer pane to a tab.

### To add a dashboard gadget:

1. Click **Dashboard Gadgets** in the explorer pane.
2. Expand the type of gadget you want to add, and then drag the gadget onto a tab.

**Note:** You can also double-click a gadget in the explorer pane to open it within a new tab.

Once a gadget has been added, it will need to be configured. For more information, see “Configuring Gadgets” in the *Administrator Guide*.

## Adding Devices

When using gadgets, you can provide device details when you configure the gadget, or you can add devices to be saved for later use.

### To add a device to the Workspace Studio:

1. Click **Devices > Add New Device**.
2. Type the IP address or hostname of the device.
3. Select an option for when to display the device status.

**Note:** When monitoring a large number of devices, it is a good idea to set your devices to show status **Only When Monitored** in a Gadget to reduce unnecessary overhead.

4. **If you want to discover the device credentials based on the existing credential sets**, click **Discover a Credential**.
5. **If you want to select an existing credential set**, select the credential set from the list, and then click **Test this Credential**.
6. **If you want to create a new credential set**, click **Add a new credential**, provide the appropriate information, and then click **OK**.
7. Click **OK**.

## Managing Tabs

Tab layout and design is fully customizable. This allows you to create multiple tabs containing multiple sets of gadgets. You can easily switch from a tab showing you details on a core switch to a tab showing you discovery information. Tabs can be saved so that you can return to your customized view.

### To create a new tab:

1. Click **Tabs > New Tab**.
2. Drag and drop any gadgets you want to the tab.
3. **If you want to save the tab**, right-click on the tab name and then click **Save Tab**. If you want to save the tab under a group name, type the name and then click **OK**.

You can also create horizontal or vertical groups of tabs. This allows you to move multiple groups of tabs in a split-view on your monitor. To split tabs horizontally, click **Tabs > New Horizontal Tab Group**. To split tabs vertically, click **Tabs > New Vertical Tab Group**.

### Notes:

- Any tab left unsaved when closing the Workspace Studio will return when restarting the application.
- Gadgets can be dragged from one tab and dropped into another tab.

Gadgets can be copied from one tab to a newly created tab by dragging the gadget to a blank area next to an existing tab.

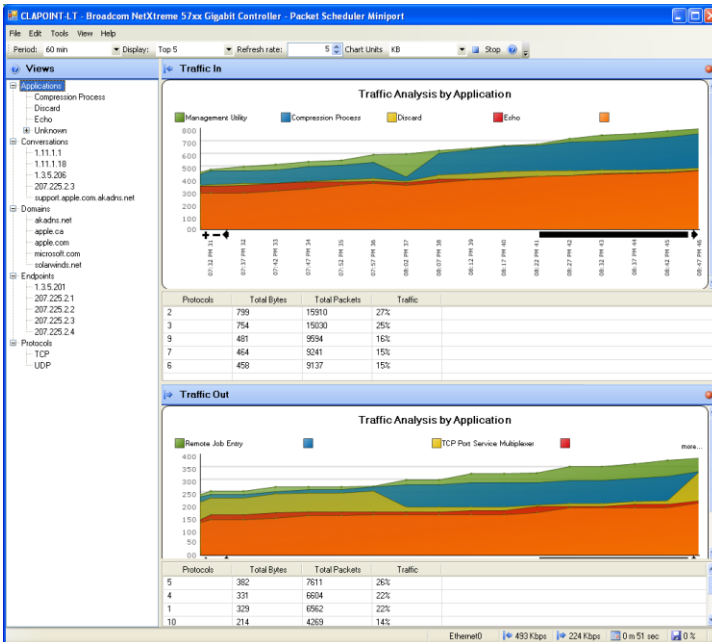
## Analyzing Your Network Traffic

SolarWinds Engineer's Edition Toolset includes a realtime capture and analysis tool that allows for storage of up to 1 hour of Cisco NetFlow data. It displays inbound and outbound traffic separately for granular analysis and troubleshooting.

### To view realtime NetFlow data:

1. Launch from Toolset Launchpad by clicking on **Cisco Tools** and then double-clicking **NetFlow Realtime**.
2. If you have Cisco routers configured properly to send NetFlow data to the Toolset host machine, you will see them listed in the dialog with green check marks next to the interfaces the tool is receiving NetFlow data about. Select an interface and then click **Start Flow Capture** to begin analyzing NetFlow data.

3. From here, you can granularly analyze NetFlow data being received by navigating the view categories in the left pane.
4. **If you want to view application data**, complete the following procedure:
  - a. Click **Applications** to display the distribution of traffic utilization of the Top XX applications (Top 5 is default).



- b. Expand this category to display a list of all applications in the NetFlow data being received.
- c. Select an application in this list to display the distribution of traffic utilization of all the nodes that are utilizing the selected application or port.
- d. Map unknown ports to application names by right-clicking on the port and then clicking **Map Port**.

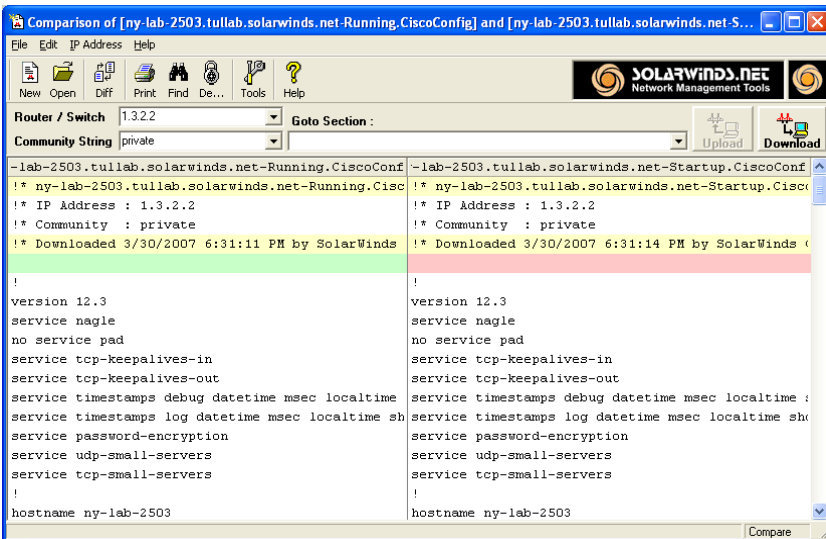
5. **If you want to view conversation data**, complete the following procedure:
  - a. Click **Conversations** to display the distribution of traffic utilization among the Top XX nodes that are the source of conversations (Top 5 is default).
  - b. Expand this category to display a complete list of all the source nodes of the conversations. The entries will display the host name of the node if reverse DNS resolution is successful, otherwise the IP address will be displayed.
  - c. Select a host or IP address to display the distribution of traffic utilization of all the hosts with which the selected host is communicating.
6. **If you want to view domain data**, complete the following procedure:
  - a. Click **Domains** to display the distribution of traffic utilization among the Top XX domains (Top 5 is default).
  - b. Expand this category to list all the domains that have been resolved. If reverse DNS resolution is unsuccessful, an IP address will be displayed.
  - c. Select a domain or IP address to display the distribution of traffic utilization of all the domains with which the selected domain is communicating.
7. **If you want to view endpoint data**, complete the following procedure:
  - a. Click **Endpoints** to display the traffic utilization distribution across the Top XX nodes (Top 5 is default).
  - b. Expand this category to list all nodes. The entries will typically display the host name of the node if reverse DNS resolution is successful, otherwise the IP address will be displayed.
  - c. Select an endpoint to display the traffic utilization distribution of all nodes that transmitted to and from the selected node.
8. **If you want to view protocol data**, complete the following procedure:
  - a. Select and view this category to display the traffic utilization distribution by protocol (e.g., TCP, UDP, etc.) for the Top XX nodes utilizing the protocol (Top 5 is default).
  - b. Expand this category to list the individual protocols in the NetFlow data being received.
  - c. Select one of the protocols to display the traffic utilization of nodes that utilized the protocol.

## Viewing and Comparing Router Configurations

SolarWinds Toolset includes a collection of Cisco router and switch configuration tools for downloading, modifying, comparing, and uploading device configurations using SolarWinds TFTP Server.

### To view and compare configuration files:

1. Launch from Toolset Launchpad by clicking **Cisco Tools** and then double-clicking **Cisco Config Viewer**.
2. Type the hostname or IP address of your router or switch.
3. Type the read/write community string
4. Click **Download** to start transfer process.
5. Select the type of configuration you want to download, and then click **OK**.
6. To compare startup versus running configuration on a particular router, click **File > Compare Startup vs. Running Configs**.



7. To compare previously downloaded configuration files, click **File > Compare Two Config Files**.

## Mapping Your Switch Ports

Switch Port Mapper is an automated tool used to remotely discover the devices connected to each switch/hub port, including the MAC address, IP address, and hostname of the connected devices as well as details about each port. Reports can be easily exported to Excel, PDF, CSV, and HTML.

**Note:** Only switches and hubs that support the BRIDGE-MIB can be mapped.

### To map the ports of a switch:

1. Launch from Toolset Launchpad by clicking **Network Discovery** and then double-clicking **Switch Port Mapper**.
2. Click **Select Switch** and then type the target hostname or IP address of the switch/hub and a read/write community string.
3. Click **Select Router** and enter router/server hostname or IP address (must be directly connected to the same subnet as the target switch/hub) and a read community string. This device will be used to resolve MAC to IP address and then reverse DNS will be used to resolve IP address to hostname.
4. Click **Map Ports** to start the switch port mapping process.
5. **If you want to save the results**, click **Export** and select the format you want to use (CSV, text file, HTML, Excel, or Adobe PDF).

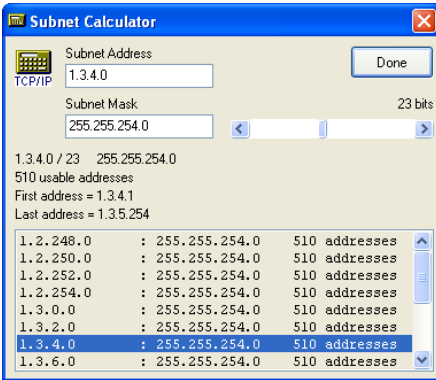
## Managing Your Network IP Addresses

IP Address Management is a tool for actively monitoring which IP addresses are in use on your network, including:

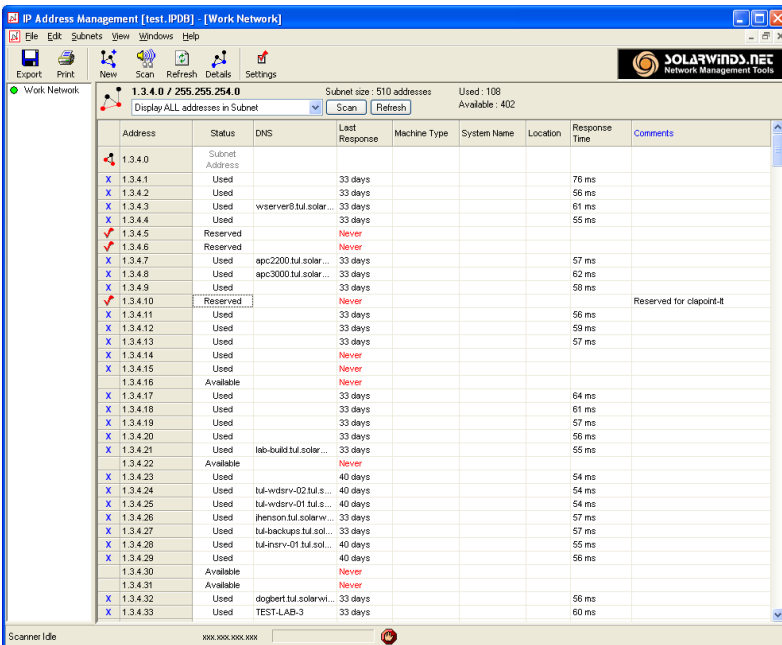
- IP address status
- DNS name
- Number of days since the last response
- Machine type
- System name
- Location
- Response time
- User-defined comments

## To manage your IP addresses:

1. Launch from Toolset Launchpad by clicking **IP Address Management** and then double-clicking **IP Address Management**.
2. Click **New** to add a new subnet.
3. Type your subnet information in the New Subnet window. Click **Subnet Calculator** to get help on selecting the appropriate subnet mask and the number of IP addresses that will be included in the scan.



4. Click **OK** to save your subnet information, and perform a scan.



5. **If you want to save the results**, click **Export** and select the format you want to use (CSV, text file, HTML, Excel, or Adobe PDF).

## ***Viewing Realtime Network Device Statistics***

Realtime Interface Monitor is a network interface monitor capable of displaying statistics from multiple routers and switches simultaneously, including:

- Interface / port status
- Time of last change
- Current receive and transmit traffic rates
- Interface percent utilization
- Duplex settings
- Collisions
- Alignment errors
- Runts
- Giants

**Note:** This release supports over 400 standard and vendor proprietary statistics.

### **To view realtime network statistics:**

1. Launch from Toolset Launchpad by clicking **Network Monitoring** and then double-clicking **Realtime Interface Monitor**.
2. Type the hostname or IP address and SNMP community string of your device.

### 3. Click **Monitor** to start network interface monitoring

Real-Time Interface Monitor [ny-lab-2503.tullab.solarwinds.net]

File Edit Statistics Tools Help

Statistics Group: Traffic

Hostname or IP Address: 1.3.2.2

SNMP Community String: public

ny-lab-2503.tullab.solarwinds.net Cisco 2503

Status	Interface	Type	Type	Speed	Bytes Received	Receive Percent Utilization	Transmit Percent Utilization	Bytes Transmitted	Local Description
○	BRIO	---	Link Access Protocol D	16.0 Kbps	baselining ...	baselining ...	baselining ...	baselining ...	This is the name of the
○	BRIO:1	PPP	PPP	64 Kbps	baselining ...	baselining ...	baselining ...	baselining ...	
○	BRIO:2	PPP	PPP	64 Kbps	baselining ...	baselining ...	baselining ...	baselining ...	
●	Ethernet0	Ethernet	Ethernet	10 Mbps	baselining ...	baselining ...	baselining ...	baselining ...	Link to Cisco3548XL 1
●	Serial0	Frame Relay	Frame Relay	64 Kbps	baselining ...	baselining ...	baselining ...	baselining ...	
●	Serial1	Frame Relay	Frame Relay	64 Kbps	baselining ...	baselining ...	baselining ...	baselining ...	Physical Interface for F
●	Null0	Other	Other	4.3 Gbps	baselining ...	baselining ...	baselining ...	baselining ...	
●	Loopback0	Loopback	Loopback	4.3 Gbps	baselining ...	baselining ...	baselining ...	baselining ...	Loopback Interface on
●	Loopback3	Loopback	Loopback	4.3 Gbps	baselining ...	baselining ...	baselining ...	baselining ...	Loopback Interface on
●	Serial0.101	Frame Relay	Frame Relay	64 Kbps	baselining ...	baselining ...	baselining ...	baselining ...	
●	Serial1.201	Frame Relay	Frame Relay	64 Kbps	baselining ...	baselining ...	baselining ...	baselining ...	
●	BRIO-Physical	ISDN	ISDN S/T Interface	144 Kbps					
○	BRIO-Signaling	ISDN	ISDN and X.25	16.0 Kbps	baselining ...	baselining ...	baselining ...	baselining ...	
●	BRIO:1-Bearer Channel	ds0	Digital Signal Level 0	64 Kbps					
●	BRIO:2-Bearer Channel	ds0	Digital Signal Level 0	64 Kbps					

27 seconds until next update...

- To change the interface details being displayed, select a new group from the **Statistics Group** list.
- You can add, new statistics groups by clicking **File > Settings** and then clicking the Statistics Groups tab
- If you want to launch a graphical bandwidth monitor**, click an interface and then click **Edit > Bandwidth Gauge**.

